

**METTEC**  
S Y S T E M E

[www.mettecsysteme.com](http://www.mettecsysteme.com)

**METTEC CONSTRUCTION CHEMICALS**

*Towards Building Tomorrow*



## OUR COMPANY

**METTEC SYSTEME** was established in Kuala Lumpur, Malaysia in **2020**. **METTEC SYSTEME** is a diversified manufacturer and supplier of premium building products and related technologies for the construction industries. We are the professional choices for contractors, and we are confident that you'll find what you are looking for with our wide product ranges. We put great pride into the relationships and partnerships that we form with our clientele.

**METTEC SYSTEME** presents the engineering solutions to the constructions sector with the conception of continuous improvement and high quality.

# DEWA

in innovation and reputation  
in communication with our clients  
in building and nurturing partnerships for life

## OUR MISSION

To be a prominent provide of superior Building Material provider in the region by continuously improving the quality of our products and services, adding value for clients through innovation, foresight, integrity, and aggressive performance; to maintain highest level of professionalism and integrity in our relationship with our client.

## OUR VISION

To be premier organization operating locally and internationally that provides the complete range of quality building materials to all segments under one roof, locally and internationally.



**SAFETY**  
**QUALITY**  
**ETHICS**  
**SUSTAINABILITY**

**METTEC SYSTEME** is built upon time tested values of excellence and integrity. This means working to the highest ethical standards and being measured by the ensuring quality of our products.

We are committed to leaving legacy of progress by developing local skills for sustained economic opportunity and volunteering our time and talent to the communities where we work.



**MET-GROUT 70**  
Pumpable High Strength  
Cementitious Grout

**MET – GROUT 70** is a combination of Portland cements, graded fillers and chemical additives. The low water demand ensures high early strength. The graded filler is designed to assist uniform mixing and produce a consistent grout.

**MET – GROUT 70** is used for general purpose, non – shrink cementitious grouting of gap thickness up to 100mm. Recommended applications at flowable consistency include base plates, bolt pockets and void filling. At pumpable or flowable consistency MET – GROUT 70 is recommended for bedding load bearing components.

**MET-FLOOR TOP**  
Non-Metallic Floor Hardener

**METFLOOR - TOP** is a quartz-silica mixture of finely graded non-metallic aggregates, plasticizer and cement binder. It is an economical concrete floor hardener recommended for both interior and exterior use. It is particularly valuable because of its non-rusting characteristics when floors will be frequently wet. **METFLOOR - TOP** is available in several colours.



**MET-FLOOR UL250**  
Durable, Cementitious,  
Self-Levelling Underlayment

**METFLOOR – UL250** is a versatile, single - component, self - levelling rapid strength gaining underlayment for Horizontal repair. Requiring only the addition of water,

**METFLOOR – UL250** a low shrinkage, high early strength material that is easy to use for fast turn-around projects. Repaired areas may be open to standard tire traffic after 5 hours following the final set.

**METFLOOR – UL250** is similar in appearance to concrete and is suitable for use in repairing concrete surfaces from approximately 4 mm to 15 mm in thickness.

**MET-LATEX SBR**  
Bonding Agent & Mortar  
Strengthening Additive

**METLATEX SBR** is a synthetic rubber emulsion for adding to cement mortar, where good adhesion and water-resistant are required. It is suitable for tropical conditions.



**betonEX SLURRY**  
Crystalline Cementitious  
Waterproofing Coating

**betonEX SLURRY** is a ready-mixed, cementitious, in-depth waterproofing slurry consist of Portland Cement, finely graded sand and active chemicals. It is applied as cementitious slurry to the pre-saturated surface of above below concrete structures



**betonEX AD7**  
Crystalline Admixture

**betonEX AD7** is an integral crystalline admixture powder added to the concrete mix at the time of batching. **betonEX AD7** specially formulated to interact with concrete capillary pore structure to provide a waterproofing system. **betonEX AD 7** consists of Portland cement and various active, proprietary chemicals. These active chemicals react with the moisture in fresh concrete and with the by-products of cement hydration to produce non-soluble crystal by catalytic reaction. These crystals block the capillaries and minor shrinkage cracks in the concrete to prevent any further water ingress (even under pressure).



**MET-SEAL 100**  
Cementitious Waterproofing  
Slurry & Protective Coating

**MET-SEAL 100** is a two-part and polymer modified cementitious waterproofing slurry to waterproof concrete and masonry. It comprises of a liquid polymer and a cement base mix incorporating with special additive.



**MET-SEAL 102**  
Cementitious Flexible Waterproofing  
Coating

**MET-SEAL 102** is a two-part, polymer modified and flexible cementitious waterproofing coating. It is applied to concrete and mortar to prevent water infiltration in severe conditions. It is also enhanced the ability of substrates to resist sulphate attack and limit carbon dioxide penetration.

**MET-SEAL 1K**  
Single Component, Polymer Modified Flexible  
Cementitious Waterproofing Coating.

**MET-SEAL 1K** is a one component, flexible, mortar, based on cement modified with special alkali-resistant polymers. It also contains fine fillers, selected graded aggregates, plus special waterproofing additives to produce a flexible mortar that is ideal for waterproofing surfaces subject to flexural strain.

**MET-PROOF 3000S**  
Torch Applied Bituminous  
Waterproofing Membrane

**MET-PROOF 3000 S** are plastomeric waterproofing membranes manufactured in an advanced continuous calendaring process by saturating and coating a synthetic carrier with a waterproofing compound made of a special grade of bitumen, which is modified with APP polymers. While the APP polymers enhance the thermal, mechanical, and aging properties of the membranes compound, the mechanical characteristics of **MET-PROOF 3000 S** are established by the non-woven continuous filament spun-bond Polyester which acts as the reinforcement that provides the membrane with its tensile strength, tear resistance, puncture resistance and elongation properties.

The upper surface of **MET-PROOF 3000 S** is covered with sand finish material while the lower surface is laminated with a thermo-fusible polyethylene film.



**MET-LASTIK PU500**  
Liquid Applied, Hybrid Polyurethane,  
Elastomeric Waterproofing Membrane

**MET-LASTIK PU 500** is an elastomeric liquid applied hybrid PU Acrylic based waterproof coating formulated to give long-lasting, maintenance free and superior waterproofing protection for concrete substrates. MET-LASTIK PU 500 offers the most advanced waterproofing technology and is guaranteed to provide long term performance.

**MET-PROOF 4000M**  
Torch Applied Waterproofing  
Membrane

**MET-PROOF 4000 M** is plastomeric waterproofing membranes manufactured in an advanced continuous calendaring process by saturating and coating a synthetic carrier with a waterproofing compound made of a special grade of bitumen, which is modified with APP polymers. While the APP polymers enhance the thermal, mechanical, and aging properties of the membranes compound, the mechanical characteristics of **MET-PROOF 4000 M** are established by the non-woven continuous filament spun-bond Polyester which acts as the reinforcement that provides the membrane with its tensile strength, tear resistance, puncture resistance and elongation properties.

The upper surface of **MET-PROOF 4000 M** is covered with slate chips/granular (mineral self-protection) material while the lower surface is laminated with a thermo-fusible polyethylene film.



**MET-LASTIK PU300**  
Water Based, Liquid Applied PU Elastomeric  
Waterproofing Membrane

**MET-LASTIK PU300** is a single component, high build, thixotropic, emulsified modified with PU pre-polymers and synthetic rubber copolymer of the high performance Neoprene type. The fusion of PU pre-polymer and Neoprene rubber in modified emulsion imparts special properties to the product such as better elongation, recovery and cold flexibility.



**MET-LASTIK 100**  
Elastic Exterior Waterproofing Coating

**MET-LASTIK 100** is an elastic covering of creamy consistency, using styrene-acrylic copolymers in watery emulsion which, once dry, forms a flexible, waterproofing and durable film. **MET-LASTIK 100** is a single component 'Ready to Use' formulation with quick drying properties at room temperature.



**MET-STOP PVC**  
Flexible PVC Waterstop

**MET-STOP PVC** is extruded from specially compounded PVC and is designed for use in water retaining and water excluding structures where a positive seal is required for poured in-situ concrete expansion, construction and contraction joints. **MET-STOP PVC** is available in different sizes and types, depending on the requirements.



**MET-STOP SW**  
Hydrophilic Swellable Waterstop

**MET-STOP SW** is made of high performance hydrophilic rubber strips. The swelling action is the result of contact with water. Expansion of the waterstop creates a positive compression seal against the face of the concrete joint and prevents water entry into the structure through the protected joint.





**MET-PU GROUT 1022T**  
Low Viscosity Hydrophilic PU Foam Injection Grout

**MET-PU GROUT 1022T** is a one-part solvent free hydrophilic PU foam injection grout. It has low viscosity, high penetration, quick setting and forms tough & flexible polyurethane rubber after complete chemical reaction. It is used for sealing and filling of dry, damp and water bearing cracks.



**MET-PU GROUT 1022M**  
Single Component Polyurethane Resin

**MET-PU GROUT 1022M** is a single component, phthalate free, low viscosity, hydrophobic, polyurethane resin which is based on MDI (Methylene Diphenyl ISO Cyanate) polyurethane. It is designed to stop water infiltration and fill voids outside a structure or joint and cracks in concrete structures. It may also be used in applications with high pressure flowing water. The system foams to 20 – 26 times its volume in the presence of water and can be an effective means of arresting running water seepage.



**MET-DURAL 43 GEL**  
Non-Seg, 2-Part Epoxy Adhesive

**MET-DURAL 43 GEL** is a two-component, 100% solids, moisture insensitive, high strength epoxy adhesive and binder for numerous applications. This low modulus, non-sag epoxy resin is the perfect solution for general bonding applications.



**MET-DURAL 43 LV**  
Low Viscosity Crack Injection Resin

**MET-DURAL 43 LV** is a two-component, 100% solids, moisture insensitive, high strength epoxy adhesive and binder for numerous applications. This high modulus, low viscosity epoxy resin is the perfect solution for general bonding applications and for injecting cracks in concrete and a variety of other substrates.



**MET-GROUT EP**  
Flowable Epoxy Grout

**MET-GROUT EP** is a three-component, high flow, high strength, expansive epoxy grout designed for large plates and narrow configurations where flowability is critical.





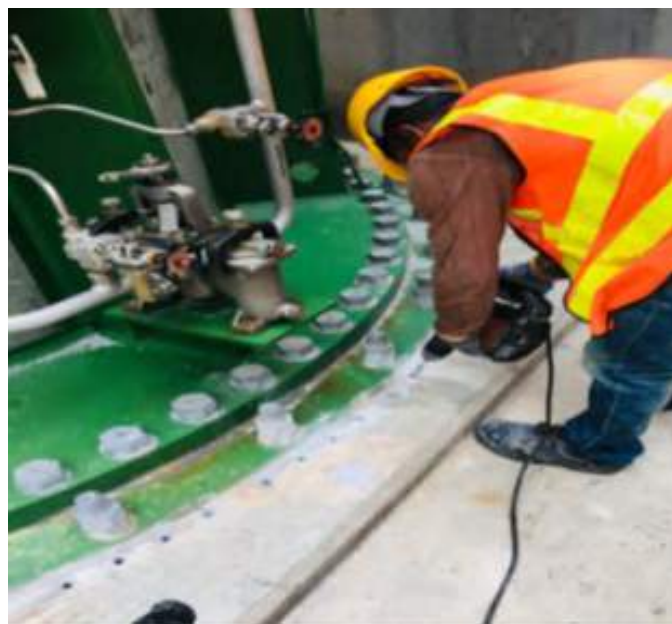
**MET-FORM EX**  
Chemical Form Release Agent

**MET-FORM-EX** is a chemical release agent for use on both timber and steel moulds. It is designed and formulated to function as a bond breaker between formwork or moulds and freshly placed concrete. **MET-FORM EX** offers protection to both steel and timber formwork as it acts as a rust inhibitor and waterproofer.



**MET-FORM WB**  
Water Based Form Release Agent

**MET-FORM WB** is a water-based release agent for use on both timber and steel moulds. It is designed and formulated to function as a bond breaker between formwork or moulds and freshly placed concrete.



**MET-CURE WB**  
Polymer Emulsion Curing Compound for  
Internal Application

**MET-CURE WB** is a liquid polymer emulsion membrane curing compound applied to fresh concrete dries to a transparent film enabling improve curing of the concrete by reducing loss of water from the concrete.

**MET-CURE HARD**  
Liquid Densifier & Sealer for Concrete

**MET-CURE HARD** is a unique blend of silicate and silicate polymers that penetrate concrete surfaces and chemically react to provide an increase in surface density, durability, and abrasion resistance. Concrete treated with **MET-CURE HARD** is dust-proofed, resists tire marks, and is easier to maintain. Over time, **MET-CURE HARD** provides an attractive, slip resistant sheen to concrete that never peels, fades, or wears away





**MET-FLEX PU**  
Single Component, Non-Sag Polyurethane Sealant

**MET-FLEX PU** is a single-component, non-sag, low-modulus, moisture-cure, polyurethane joint sealant. **MET-FLEX PU** is formulated with a unique silane-terminated polyurethane polymer, that provides unequalled performance against stand-alone polyurethane sealants. **MET-FLEX PU** is an extremely durable sealant in dynamic joints, offering persistent adhesion once fully cured.



**MET-FLEX 105**  
2-Component Gun Grade Polysulphide Joint Sealant

**MET-FLEX 105** is a non – sagging, 2 component, chemical resistant, elastomeric, polysulphide joint sealant. **MET-FLEX 105** is specifically designed to be used as a watertight seal for moderate movement and control joints. It is based on polysulphide polymer. After curing, it forms a tough, flexible and non – staining rubber like seal. It has excellent adhesion to concrete, stone, metal and resistant to many chemicals, shrinkage, aging, thermal stress and effects of outdoor exposure. **MET-FLEX 105** is suitable for use in both vertical and horizontal applications.

**MET-FLEX 101**  
2-Component Pourable Polysulphide Joint Sealant

**MET-FLEX 101** is a two-component pourable, self-levelling polysulphide resin based joint sealant. **MET-FLEX 101** is specifically designed to be used as a watertight seal for moderate movement and control joints in horizontal areas. **MET-FLEX 101** has excellent adhesion to concrete, stone, metal and other common building surface. The cured sealant has good resistance to most environmental chemical and resists deterioration on prolonged exposure to UV. **MET-FLEX 101** is suitable for use in horizontal areas with a maximum slope gradient of 10%



**MET-PLAST EX**  
Expanding & Plasticizing Additive  
for Cement Grout

**MET-PLAST EX** is an expanding and stabilizing agent in powder form to promote expansion in cement based mixes before initial cement setting. It also contains a high range water reducing agent, which allows reductions in water/cement ratio, hence increasing compressive strength and durability of the mix.



**MET-FLOW 800PC**  
High Performance Superplasticising  
Admixture for Concrete

**MET-FLOW 800PC** is a ready to use concrete admixture based on polycarboxylate chemistry. **MET-FLOW 800PC** can be used for early strength enhancement and to produce high performance concrete.

**MET-FLOW 800PC** complies with EN 934 – 2 and ASTM C 494 Type A & F concrete admixtures.





# METTEC

S Y S T E M E

HEAD OFFICE - MALAYSIA

**METTEC SYSTEME SDN BHD** (1406314-K)  
**METTIC SYSTEME SDN BHD** (1169100-K)



Hotline: +6012-350 1024



enquiry@metticsysteme.com



Lot 684-A, Jalan 2C,  
Kpg. Baru Subang, 40150 Shah Alam,  
Selangor, **MALAYSIA**

INDIA OFFICE

**METTEC SYSTEM INDIA PVT LTD**



Hotline: +91 99307 61438



enquiry@metticsysteme.com



B - 408, 4th Floor, Kailas Business Park,  
Hiranandini - Vikhroli Link Road, Vikhroli West,  
400079 Mumbai, Maharashtra,  
**INDIA**

SRI LANKA OFFICE

**METTEC SYSTEM LANKA (PVT) LTD**



Hotline: +94 77 675 2180 / +94 77 675 2864



enquiry@metticsysteme.com



205 - A/1A, Allen Avenue, Dehiwala,  
10350 Colombo,  
**SRI LANKA**

